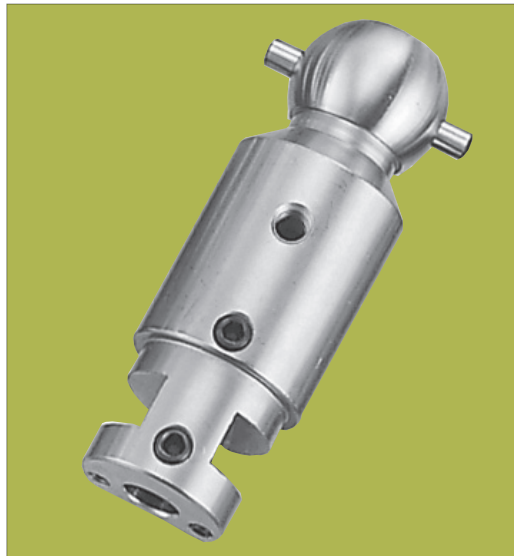




NEWEN ball heads are:

- **Heat treated** not to deform over time
- **Precision ground** on the outside to use NWN Fixed Cutters

NEWEN ball heads can be used with either **dead or live pilots** and have a **standard 1" ball** to use with your existing tooling.



■ **NWN-BH375F**

Ball head, diameter .375" (**9.52mm**) for Mira, Serdi, K.O. Lee, Snap On, Neway, Winona, Peterson, Kwik-Way & NEWEN® pilots (uses tip holders, NWN2000, NWN2001 & NWN2002).

■ **NWN-BH385F**

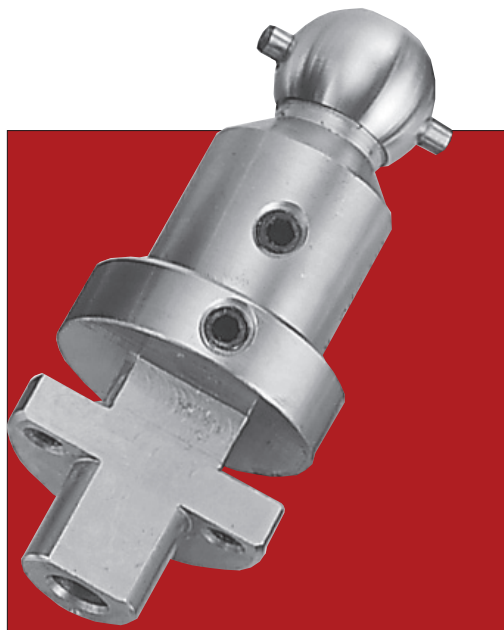
Ball head, diameter .385" (**9.78mm**) for Sioux pilots (uses tip holders, NWN2000, NWN2001 & NWN2002).

■ **NWN-BH389F (While Supplies Last Only - Discontinued Item)**

Ball head, diameter .389" (**9.88mm**) for Tobin Arp pilots (uses tip holders, NWN2000, NWN2001 & NWN2002).

■ **NWN-BH390F**

Ball head, diameter .390" (**9.91mm**) for Sunnen pilots (uses tip holders, NWN2000, NWN2001 & NWN2002).



■ **NWN-BH375W**

Wide Body Ball head, diameter .375" (**9.52mm**) for Mira, Serdi, K.O. Lee, Snap On, Neway, Winona, Peterson, Kwik-Way & NEWEN® pilots (uses tip holders, NWN2003, NWN2004, NWN2005, NWN2003-CBN-15, NWN2003-CBN-20, NWN2003-CBN-30, NWN2003-CBN-45).

■ **NWN-BH385W**

Wide Body Ball head, diameter .385" (**9.78mm**) for Sioux pilots (uses tip holders, NWN2003, NWN2004, NWN2005, NWN2003-CBN-15, NWN2003-CBN-20, NWN2003-CBN-30, NWN2003-CBN-45).