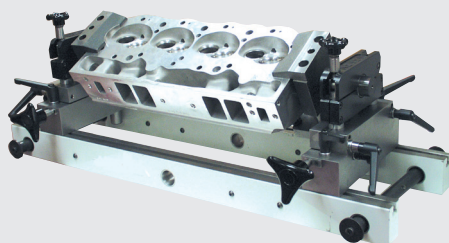


- Easily adapts to any brand seat & guide machine.

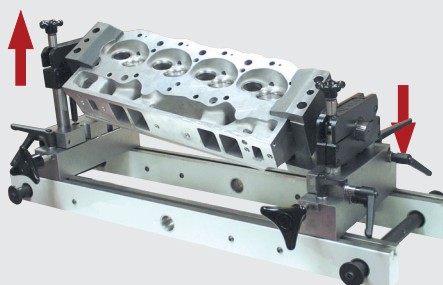
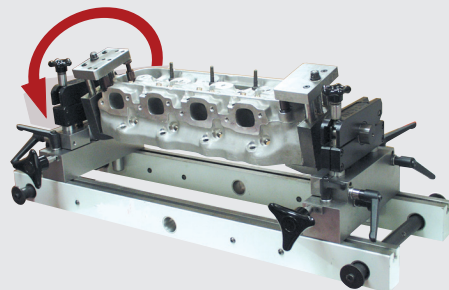
■ SGC200M

Palletizable™, 360° double-angle manual rollover clamping fixture; includes NWN-TLEVEL

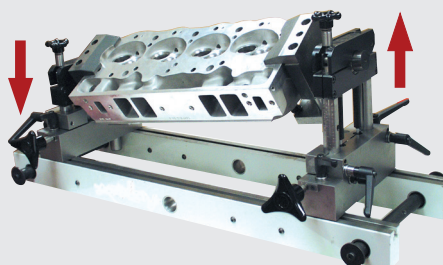
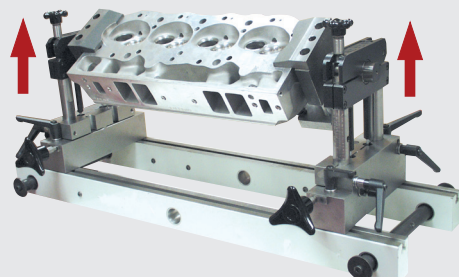
Patented

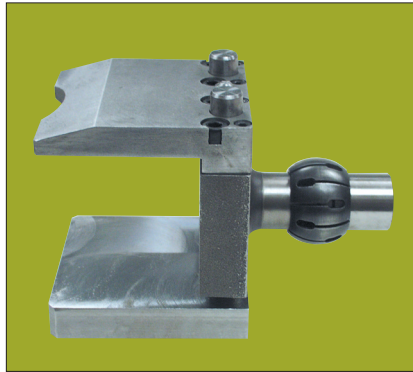


- NEWEN®'s most universal precision clamping system for automotive and light diesel cylinder heads. Allows quick positioning of most cylinder heads regardless of the valve guide angles. Also allows to simply raise cylinder heads to any desired level and to roll them over for various jobs.



- This patented system is quick, universal, very rigid, user friendly and does not put any stress on cylinder heads owing to its independant jaws and spherical collet clamping system. **A must for any seat & guide machine.**



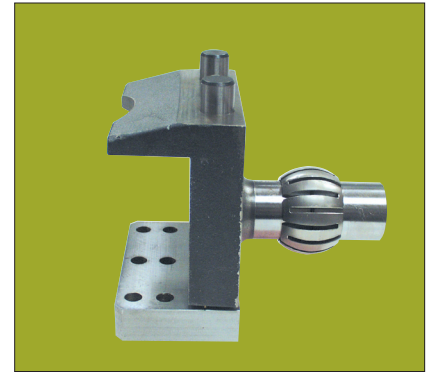


■ **SGC425**
Extended reach jaw for SGC200M & SGC200H clamping systems.

■ **SGC425-S**
Extended reach jaw for SGC200M-S clamping systems (for SUPER100™ machines).

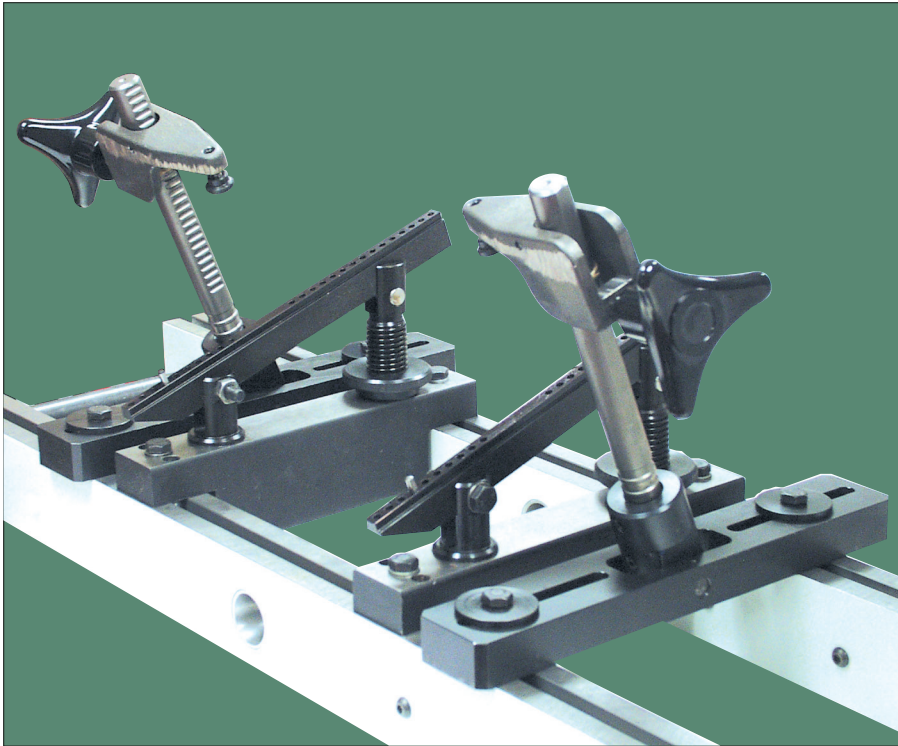


■ **SGC416**
Set of two tall jaw columns & contact plates (8.58") for SGC200M & SGC200H clamping systems.



■ **SGC417**
Set of 2 additional clamping jaws for SGC200M & SGC200H clamping systems.

■ **SGC417-S**
Set of 2 additional clamping jaws for SGC200M-S clamping systems (for SUPER100™ machines).

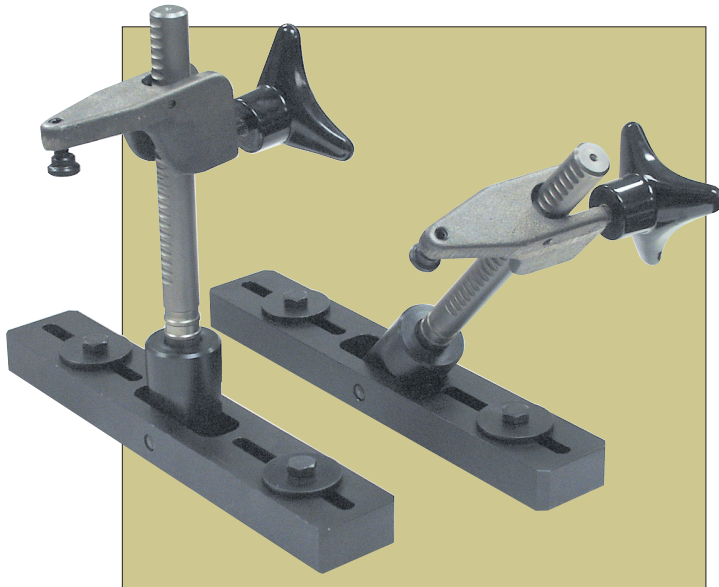
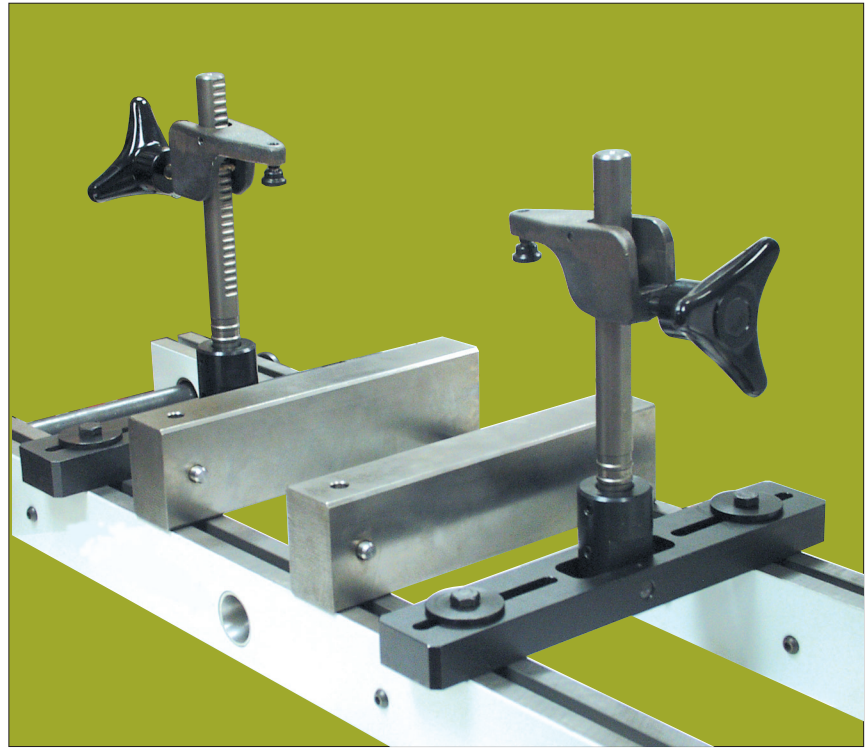


■ **SGC212**

Multi-angle cylinder head clamping fixture and set of 2 side clamps
(SGC704 & SGC705 included).

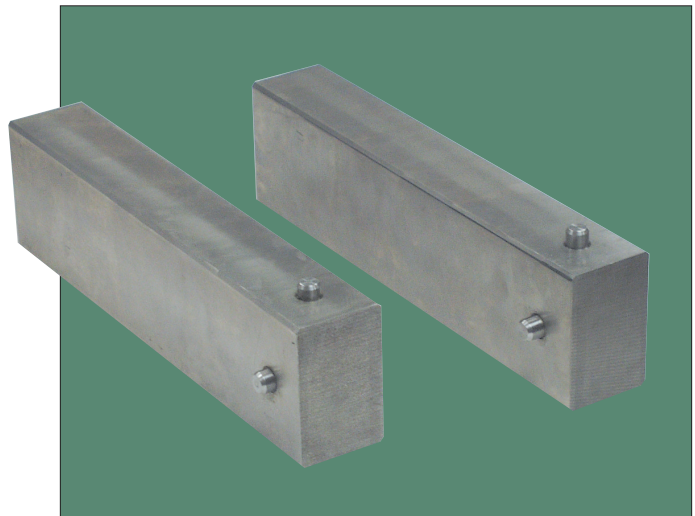
■ **SGC201**

Side clamping fixture with set of 2 riser blocks.



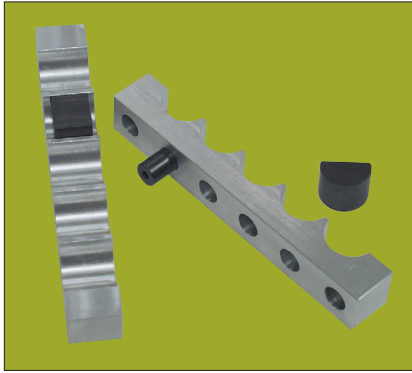
■ **SGC407**

Set of 2 side clamps.



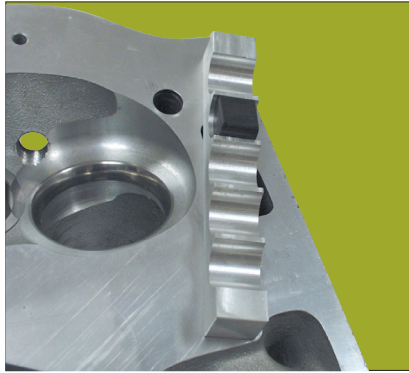
■ **SGC403**

Set of 2 precision machined cast iron cylinder head positioning blocks (riser blocks).



■ **SGC404**

Set of 2 aluminum pads for clamping aluminum cylinder heads (commonly used with SGC212).



■ **SGC405**

Set of 2 long side clamp bars for SGC201, SGC212 or SGC213.